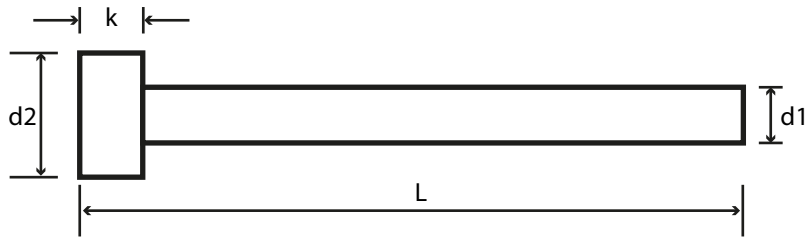


EJECTOR PIN 'A' TYPE (non std. size)



EJECTOR PIN THROUGH HARDEN
SUITABLE FOR PLASTIC MOLDING, HARDNESS - 52 TO 58 HRC

Dimension			LENGTH (L)									
d1	d2	k	100	125	160	200	250	300	350	400	500	600
0.8	3	2	A	A	A							
0.9	3	2	A	A	A							
1.1	3	2	A	A	A							
1.2	3	1.5	A	A	A							
1.3	3	2	A	A	A							
1.4	3	2	A	A	A							
1.6	4	2	A	A	A							
1.7	4	2	A	A	A							
1.8	4	2	A	A	A							
1.9	4	2	A	A	A							
2.1	5	2	A	A	A							
2.2	5	2	A	A	A	A	A	A				
2.3	5	2	A	A	A	A	A	A				
2.4	5	2	A	A	A	A	A	A				
2.6	6	3	A	A	A	A	A	A				
2.7	6	3	A	A	A	A	A	A				
2.8	6	3	A	A	A	A	A	A				
2.9	6	3	A	A	A	A	A	A				
3.1	6	3	A	A	A	A	A	A				
3.2	6	3	A	A	A	A	A	A				
3.3	6	3	A	A	A	A	A	A				
3.5	7	3	A	A	A	A	A	A				
3.7	8	3	A	A	A	A	A	A				
4.2	8	3	A	A	A	A	A	A				
4.5	8	3	A	A	A	A	A	A				
5.2	10	3	A	A	A	A	A	A	A	A	A	A
5.5	10	3	A	A	A	A	A	A	A	A	A	A
6.2	12	5	A	A	A	A	A	A				
6.5	12	5	A	A	A	A	A	A				
6.8	12	5	A	A	A	A	A	A				
7.0	12	5	A	A	A	A	A	A				
8.2	16	5	A	A	A	A	A	A	A	A	A	A
8.5	14	5	A	A	A	A	A	A				
9.0	14	5	A	A	A	A	A	A	A	A		
10.5	16	5	A	A	A	A	A	A				
11.0	16	5	A	A	A	A	A	A				
14.0	22	7	A	A	A	A	A	A	A	A	A	A
25.0	32	10	A	A	A	A	A	A	A	A	A	A

A - Available